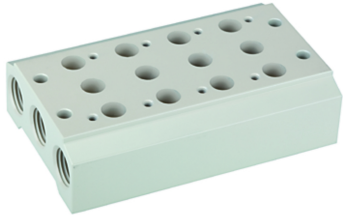


K-MEHRFACH GRUNDPLATTE 5/2

5/3 WV

Multiple manifold bases



Apraksts

Aluminium alloy manifold bases 6061-T6 for 2 to 8 valve positions.

Norādot

Citi dati pieejami pēc pieprasījuma.

Produkts

Apzīmējums	Definīcija	vārsta pieslēgumam
K- 07 15 06 66	Manifold base for 2 valve positions	M 5, G 1/8
K- 07 15 06 70	Manifold base for 3 valve positions	M 5, G 1/8
K- 07 15 06 74	Manifold base for 4 valve positions	M 5, G 1/8
K- 07 15 06 78	Manifold base for 5 valve positions	M 5, G 1/8
K- 07 15 06 82	Manifold base for 6 valve positions	M 5, G 1/8
K- 07 15 06 86	Manifold base for 7 valve positions	M 5, G 1/8
K- 07 15 06 90	Manifold base for 8 valve positions	M 5, G 1/8
K- 07 15 06 94	Cover plate for ground plate	M 5, G 1/8
K- 07 15 06 65	Manifold base for 2 valve positions	G 1/8, G 1/4
K- 07 15 06 69	Manifold base for 3 valve positions	G 1/8, G 1/4
K- 07 15 06 73	Manifold base for 4 valve positions	G 1/8, G 1/4
K- 07 15 06 77	Manifold base for 5 valve positions	G 1/8, G 1/4
K- 07 15 06 81	Manifold base for 6 valve positions	G 1/8, G 1/4
K- 07 15 06 85	Manifold base for 7 valve positions	G 1/8, G 1/4
K- 07 15 06 89	Manifold base for 8 valve positions	G 1/8, G 1/4
K- 07 15 06 93	Cover plate for ground plate	G 1/8, G 1/4
K- 07 15 06 67	Manifold base for 2 valve positions	G 1/4, G 3/8
K- 07 15 06 71	Manifold base for 3 valve positions	G 1/4, G 3/8
K- 07 15 06 75	Manifold base for 4 valve positions	G 1/4, G 3/8
K- 07 15 06 79	Manifold base for 5 valve positions	G 1/4, G 3/8
K- 07 15 06 83	Manifold base for 6 valve positions	G 1/4, G 3/8
K- 07 15 06 87	Manifold base for 7 valve positions	G 1/4, G 3/8
K- 07 15 06 91	Manifold base for 8 valve positions	G 1/4, G 3/8
K- 07 15 06 95	Cover plate for ground plate	G 1/4, G 3/8
K- 07 15 06 64	Manifold base for 2 valve positions	G 1/2
K- 07 15 06 68	Manifold base for 3 valve positions	G 1/2
K- 07 15 06 72	Manifold base for 4 valve positions	G 1/2
K- 07 15 06 76	Manifold base for 5 valve positions	G 1/2
K- 07 15 06 80	Manifold base for 6 valve positions	G 1/2
K- 07 15 06 84	Manifold base for 7 valve positions	G 1/2
K- 07 15 06 88	Manifold base for 8 valve positions	G 1/2
K- 07 15 06 92	Cover plate for ground plate	G 1/2