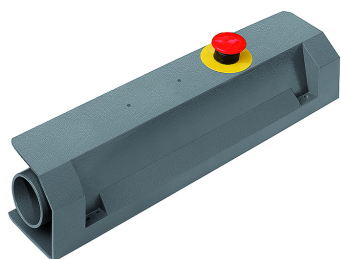


Complete pushbutton panel



Darba vides
Filtered, unlubricated compressed air
Ekspluatācijas spiediens
2.5 - 8 bar
Temperatūras diapazons
-10 °C to +60 °C
Savienojums
Push-in fitting for pipe 4 mm
Caurpl_de nom.
85 l/min
Darbība
Pneumatic
maks. ieejas signāla laika nobīde
0.4

Apraksts

This pushbutton panel according to EN574 Type III A is comprised of a dual manual control valve with a housing and manifold. The valve only generates an output signal if two synchronised input signals are received within < 0.4 sec. If one input signal is interrupted, the output signal is interrupted as well. An emergency stop valve with a mushroom pushbutton is included. The housing can be screwed to the wall in any position. The valve manifold can optionally be supplied without the housing and with a DIN bar adapter. Applications: Two-hand safety valve for start-of-cycle control on a pneumatically operated machine.

Norādīt

Citi dati pieejami pēc pieprasījuma.

Produkts

Apzīmējums

Definīcija

K- 07 15 26 08 Complete pushbutton panel with safety valve