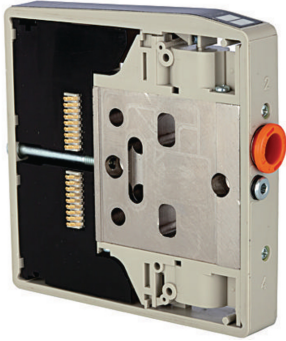


Intermediate plates for HDM valve terminal



Darba vides
Filtered, unlubricated or lubricated compressed air. If lubrication is used, it must be continuous.

Darba spiediens
Max. vacuum 10 bar (external pilots), 3 to 7 bar (internal pilots as standard)

Regulēšanas spiediens
3 - 7 bar

Temperatūras diapazons
-10 °C to +60 °C

Caurplūde
200 NL/min (Ø 4), 500 NL/min (Ø 6), 800 NL/min (Ø 8)

Aizsardzības veids
IP 65

Jaudas patēriņš
0.6 W per pilot

Manuāla palīgvadība
Latching (bistable), Monostable (non-latching) version also available on request

Vadību skaits
Max. 16 (e.g. 16 spring return valves)

Apraksts

These compact valve terminals, with a maximum flow rate of 800 NL/min, can be individually adapted to the specific conditions of each application thanks to the wide range of functions and various input and intermediate plates. Since each valve terminal is a customer-specific combination of a series of individual elements, the catalogue only lists the available input, intermediate and end plates as well as the different valve discs and the 25-pin multi-pole connectors.

Norādīt

Citi dati pieejami pēc pieprasījuma.

Produkts

| Apzīmējums | Funkcija |
|----------------|--|
| K- 07 15 22 51 | With additional pilots and exhausts |
| K- 07 15 22 52 | With separate pilots (for multi-pressure systems) |
| K- 07 15 22 44 | With separate exhausts (for multi-pressure system) |