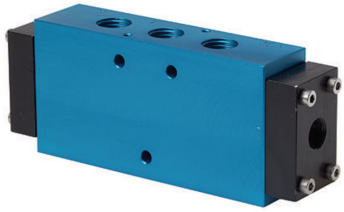


K-WV 5/2 BEIDS PNEU

5/2-way spool valves, double pneumatic



Funkcija
5/2-way
Eksploatācijas spiediens
2.5 - 10 bar; Max. vacuum 10 bar (external pilot air)
min. darba spiediens
2,5 bar
Temperatūras diapazons
-10 °C to +60 °C
Caurplūde 6 bar un 10 bar
1500 NL/min (G 1/4), 4600 NL/min (G 1/2)
Aizsardzības veids
IP 65 (DIN 46244)
Elektriskais pieslēgums
Coupler plug PG 9 - form B
Korpuss
Anodised aluminium, blue
Virzūļveida plūsmdalis
Stainless steel
Blīvējums
NBR

Apraksts

This valve design, featuring the Tapered Tee Seal®, offers the ability to run without lubrication and supports almost any compressed air quality.
The valves are largely resistant to dirt and can thus also be used under extreme conditions without any problems.
Leakage is now a thing of the past and the spool no longer sticks, even after long idle periods.

Norādot

Citi dati pieejami pēc pieprasījuma.

Produkts

Apzīmējums	Savienojums	DN	Slēguma shēmas numurs	Vadība
K- 07 15 02 19	G 1/4"	8	28	Bistabil
K- 07 15 02 20	G 1/2"	15	28	Bistabil