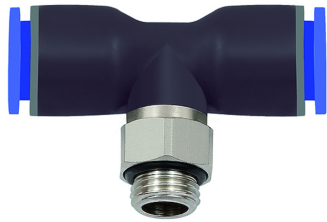


# K-T-STECK VERS DRE AG OR 2

Male branch tees, swivel type, parallel male thread with O-ring



Darba spiediens  
Max. 15 bar, coarse vacuum

Darba vides  
Compressed air and all gases or liquids that are compatible with the materials  
ieteicamās šļūtenes  
PU or PA (nylon)

Pieteikums platība  
Air, vacuum

Temperatūras diapazons  
-20 °C to +80 °C

Blīvēšanas virsma  
Parallel version: O-ring in housing

Materiāls  
Plastic, Nickel plated brass

Piespiedējgredzens  
Plastic

## Apraksts

Push-in fittings series manufactured in plastic and nickel-plated brass. All parts are suitable for use with hoses, tubes or pipes made of plastic and copper.

## Norādīt

Citi dati pieejami pēc pieprasījuma.

## Produkts

Apzīmējums	Vītnes	L1 mm	L2 mm	šļūtenes ārējam Ø	SW
K- 07 40 02 59	M 5	36.0	21.1	4 mm	8 mm
K- 07 40 02 60	M 5	40.0	22.2	6 mm	8 mm
K- 07 40 02 71	G 1/8	36.0	19.0	4 mm	14 mm
K- 07 40 02 72	G 1/8	40.0	20.1	6 mm	14 mm
K- 07 40 02 73	G 1/8	45.4	25.7	8 mm	14 mm
K- 07 40 02 68	G 1/4	36.0	19.0	4 mm	17 mm
K- 07 40 02 69	G 1/4	40.0	20.1	6 mm	17 mm
K- 07 40 02 70	G 1/4	45.4	21.7	8 mm	17 mm
K- 07 40 02 66	G 1/4	53.8	27.6	10 mm	17 mm
K- 07 40 02 67	G 1/4	58.6	28.9	12 mm	17 mm
K- 07 40 02 77	G 3/8	40.0	21.2	6 mm	20 mm
K- 07 40 02 78	G 3/8	45.4	22.8	8 mm	20 mm
K- 07 40 02 74	G 3/8	53.8	24.6	10 mm	20 mm
K- 07 40 02 75	G 3/8	58.6	25.9	12 mm	20 mm
K- 07 40 02 76	G 3/8	69.0	34.2	16 mm	20 mm
K- 07 40 02 64	G 1/2	40.0	23.6	6 mm	24 mm
K- 07 40 02 65	G 1/2	45.4	25.2	8 mm	24 mm
K- 07 40 02 61	G 1/2	53.8	26.5	10 mm	24 mm
K- 07 40 02 62	G 1/2	58.6	27.8	12 mm	24 mm
K- 07 40 02 63	G 1/2	69.0	30.9	16 mm	24 mm