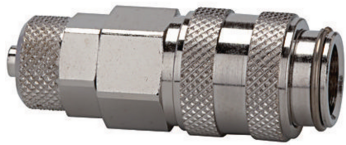


K-SVKM NW 5 SCHL MS NI1

Quick disconnect couplings DN 5, nickel-plated brass with hose connector



Ekspluatācijas spiediens
0 - 35 bar, maximum static working pressure (non-pulsating)
Vielas temperatūra
-20 °C to +100 °C
Korpuss, uzmava, vārsta korpuss
Nickel-plated brass
Atspere, sprostgredzens, lodes
Stainless steel
Blīvējums
NBR

Apraksts

One-hand quick disconnect couplings, one side sealing, compact with a large bore and only a small pressure drop. Ideal for: Pneumatic tools, pneumatic applications, medical equipment, instrumentation and control, laboratory, chemical applications, analysis, metering techniques.

Norādīt

Citi dati pieejami pēc pieprasījuma.

Produkts

Apzīmējums	Caurpl_de nom. l/min	Garums mm	Savienojums	SW mm
K- 07 35 06 65	560	43.0	Hose connection 6 x 4	14
K- 07 35 06 66	560	43.0	Hose connection 8 x 6	14