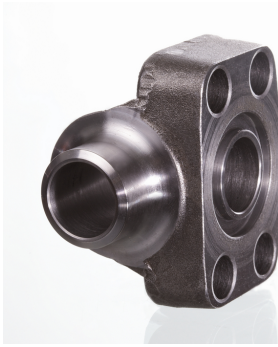


AFS 90 SRE (3000 PSI)

Piemetināms SAE atloks, 90° leņķis



Spiediena sērija
3000 psi
Standarts
SAE J 518 C
ISO 6162
ISO 6162
Konstrukcija
90° leņķis
Modelis
Piemetināms SAE atloks
Stiprinājums
Urbums skrūvei
Piegādes apjoms
tikai atloks
Materiāls
S355J2G3 (ST52.3)
Virsmas aizsardzība
ieeļļošana ar melno eļļu

Norādot

Norādītais maksimālais ekspluatācijas spiediens attiecas uz atloku! Reālo ekspluatācijas spiedienu nosaka caurule (sieniņu biezums) un tās kvalitāte!

Produkts

| Apzīmējums | PB 10.9 bar | Tipizmērs | Caurule | A | B1 | B2 | C | E | F1 | S1 | S2 | L |
|-------------------|----------------|-----------|------------|----|----|----|------|------|-----|----|----|------|
| | | | | mm | mm | mm | mm | mm | mm | mm | mm | mm |
| AFS 80/90 SRE 20 | 250 | 1/2" | 20 x 3 | 20 | 14 | 13 | 38.1 | 17.5 | 60 | 20 | 37 | 9.0 |
| AFS 80/90 SRE 22 | 160 | 1/2" | 22 x 2 | 22 | 18 | 13 | 38.1 | 17.5 | 60 | 20 | 37 | 9.0 |
| AFS 80/90 SRE 25 | 250 | 1/2" | 25 x 3 | 25 | 19 | 13 | 38.1 | 17.5 | 60 | 20 | 37 | 9.0 |
| AFS 80/90 SRE 28 | 160 | 1/2" | 28 x 3 | 28 | 22 | 13 | 38.1 | 17.5 | 60 | 20 | 37 | 9.0 |
| AFS 100/90 SRE 25 | 250 | 3/4" | 25 x 3 | 25 | 19 | 19 | 47.6 | 22.3 | 63 | 24 | 38 | 11.0 |
| AFS 100/90 SRE 28 | 160 | 3/4" | 28 x 3 | 28 | 22 | 19 | 47.6 | 22.3 | 63 | 24 | 38 | 11.0 |
| AFS 100/90 SRE 30 | 250 | 3/4" | 30 x 4 | 30 | 22 | 19 | 47.6 | 22.3 | 63 | 24 | 38 | 11.0 |
| AFS 100/90 SRE 35 | 160 | 3/4" | 35 x 4 | 35 | 27 | 19 | 47.6 | 22.3 | 63 | 24 | 38 | 11.0 |
| AFS 102/90 SRE 30 | 250 | 1" | 30 x 4 | 30 | 22 | 25 | 52.4 | 26.2 | 70 | 28 | 43 | 11.0 |
| AFS 102/90 SRE 35 | 160 | 1" | 35 x 4 | 35 | 27 | 25 | 52.4 | 26.2 | 70 | 28 | 43 | 11.0 |
| AFS 102/90 SRE 38 | 250 | 1" | 38 x 4 | 38 | 30 | 25 | 52.4 | 26.2 | 70 | 28 | 43 | 11.0 |
| AFS 102/90 SRE 42 | 160 | 1" | 42 x 3 | 42 | 36 | 25 | 52.4 | 26.2 | 70 | 28 | 43 | 11.0 |
| AFS 104/90 SRE 38 | 250 | 1.1/4" | 38 x 4 | 38 | 30 | 32 | 58.7 | 30.2 | 85 | 34 | 51 | 11.5 |
| AFS 104/90 SRE 42 | 160 | 1.1/4" | 42 x 3 | 42 | 36 | 32 | 58.7 | 30.2 | 85 | 34 | 51 | 11.5 |
| AFS 104/90 SRE 48 | 160 | 1.1/4" | 48.3 x 4.5 | 49 | 39 | 32 | 58.7 | 30.2 | 85 | 34 | 51 | 11.5 |
| AFS 106/90 SRE 38 | 210 | 1.1/2" | 38 x 4 | 38 | 30 | 38 | 69.9 | 35.7 | 95 | 38 | 56 | 13.5 |
| AFS 106/90 SRE 42 | 160 | 1.1/2" | 42 x 3 | 42 | 36 | 38 | 69.9 | 35.7 | 95 | 38 | 56 | 13.5 |
| AFS 106/90 SRE 48 | 160 | 1.1/2" | 48.3 x 4.5 | 49 | 39 | 38 | 69.9 | 35.7 | 95 | 38 | 56 | 13.5 |
| AFS 108/90 SRE 60 | 200 | 2" | 60.3 x 5.6 | 61 | 49 | 51 | 77.8 | 42.9 | 110 | 42 | 65 | 13.5 |
| AFS 108/90 SRE 76 | 200 | 2" | 76.1 x 7.1 | 77 | 62 | 51 | 77.8 | 42.9 | 110 | 42 | 65 | 13.5 |

PN = nominālais spiediens PB = maks. ekspluatācijas spiediens