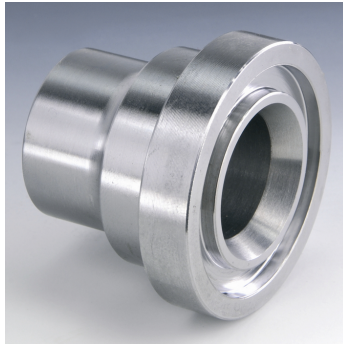


SFS U (3000 PSI)

Piemetināma SAE kopa



Spiediena sērija
3000 psi
Standarts
SAE J 518 C
ISO 6162
ISO 6162
Konstrukcija
Taisna
Modelis
Piemetināma SAE kopa
Piegādes apjoms
ar 2 atloku pusēm, skrūvju komplektu un apaļa šķērsriezuma gredzenu
Materiāls
S355J2G3 (ST52.3)

Norādīt

Norādītais maksimālais ekspluatācijas spiediens attiecas uz atloku! Reālo ekspluatācijas spiedienu nosaka caurule (sieniņu biezums) un tās kvalitāte!

Produkts

Apzīmējums	PB 10.9 bar	Tipizmērs	Caurule	A mm	Ø B mm	C mm	D mm	E mm	F mm	G mm	L mm	M collas	M metr.	L zemsv. piez.	M metr. piez.
SFS 3001-S 16 U	350	1/2"	16 x 2	16.0	12.0	38.1	54	17.5	45.6	41	8.5	5/16" x 1.1/4"	M 8 x 25	-	-
SFS 3001-21.3 U	350	1/2"	21.3 x 2.9	22.0	15.5	38.1	54	17.5	45.6	41	8.5	5/16" x 1.1/4"	M 8 x 30	-	-
SFS 3002-25 U	350	3/4"	25 x 3	27.0	18.9	47.6	65	22.2	51.8	50	10.5	3/8" x 1.1/4"	M 10 x 30	-	-
SFS 3002-26.9 U	350	3/4"	26.9 x 3.9	27.0	18.9	47.6	65	22.2	51.8	50	10.5	3/8" x 1.1/4"	M 10 x 30	-	-
SFS 3003-28 U	315	1"	28 x 3	28.0	22.0	52.4	70	26.2	58.4	50	10.5	3/8" x 1.1/4"	M 10 x 35	-	-
SFS 3003-30 U	315	1"	30 x 4	30.0	22.0	52.4	70	26.2	58.4	50	10.5	3/8" x 1.1/4"	M 10 x 35	-	-
SFS 3003-33.7 U	315	1"	33.7 x 4.5	35.0	24.7	52.4	70	26.2	58.4	50	10.5	3/8" x 1.1/4"	M 10 x 35	-	-
SFS 3003-38 U	315	1"	38 x 5	38.0	28.0	52.4	70	26.2	58.4	50	10.5	3/8" x 1.1/4"	M 10 x 35	-	-
SFS 3004-38 U	250	1.1/4"	38 x 5	38.0	28.0	58.7	79	30.2	72.6	55	-	7/16" x 1.1/2"	*2	= pēc izvēles 10,5 vai 12,5	= pēc izvēles 10 x 30 vai x 35
SFS 3004-42.4 U	250	1.1/4"	42.4 x 6.3	43.0	29.7	58.7	79	30.2	72.6	55	-	7/16" x 1.1/2"	*2	= pēc izvēles 10,5 vai 12,5	= pēc izvēles 10 x 30 vai x 35
SFS 3005-38 U	200	1.1/2"	38 x 4	38.0	30.0	69.9	94	35.7	82.2	57	13.5	1/2" x 1.1/2"	M 12 x 35	-	-
SFS 3005-42 U	200	1.1/2"	42 x 5	42.0	32.0	69.9	94	35.7	82.2	57	13.5	1/2" x 1.1/2"	M 12 x 35	-	-
SFS 3005-45 U	200	1.1/2"	45 x 5	45.0	35.0	69.9	94	35.7	82.2	57	13.5	1/2" x 1.1/2"	M 12 x 35	-	-
SFS 3005-48.3 U	200	1.1/2"	48.3 x 7.1	49.0	34.0	69.9	94	35.7	82.2	57	13.5	1/2" x 1.1/2"	M 12 x 35	-	-
SFS 3006-55 U	200	2"	55 x 5	55.0	45.0	77.8	102	42.9	96.4	57	13.5	1/2" x 1.1/2"	M 12 x 35	-	-
SFS 3006-60.3 U	200	2"	60.3 x 8	60.3	44.0	77.8	102	42.9	96.4	57	13.5	1/2" x 1.1/2"	M 12 x 35	-	-
SFS 3007-65 U	160	2.1/2"	65 x 6	65.0	53.0	88.9	114	50.8	108.2	58	13.5	1/2" x 1.3/4"	M 12 x 40	-	-
SFS 3007-70 U	160	2.1/2"	70 x 7.5	70.0	55.0	88.9	114	50.8	108.2	58	13.5	1/2" x 1.3/4"	M 12 x 40	-	-

Apzīmējums	PB 10.9 bar	Tipizmērs	Caurule	A mm	Ø B mm	C mm	D mm	E mm	F mm	G mm	L mm	M collas	M metr.	L zemspv. piez.	M metr. piez.
SFS 3007-76.1 U	160	2.1/2"	76.1 x 7.1	74.0	62.0	88.9	114	50.8	108.2	58	13.5	1/2" x 1.3/4"	M 12 x 40	-	-
SFS 3008-80 U	138	3"	80 x 6	80.0	68.0	106.4	135	61.9	130.6	60	16.7	5/8" x 2"	M 16 x 45	-	-
SFS 3008-88.9 U	138	3"	88.9 x 7	90.0	73.0	106.4	135	61.9	130.6	60	16.7	5/8" x 2"	M 16 x 45	-	-
SFS 3009-100 U	35	3.1/2"	100 x 6	100.0	88.0	120.7	152	69.9	139.0	60	17.0	5/8" x 2"	M 16 x 45	-	-
SFS 3009-88.9 U	35	3.1/2"	88.9 x 8	90.0	73.0	120.7	152	69.9	139.0	60	17.0	5/8" x 2"	M 16 x 45	-	-
SFS 3010-110 U	35	4"	110 x 6	110.0	98.0	130.2	162	77.8	152.0	60	17.0	5/8" x 2"	M 16 x 50	-	-
SFS 3010-114.3 U	35	4"	114.3 x 8.8	115.0	96.7	130.2	162	77.8	152.0	60	17.0	5/8" x 2"	M 16 x 50	-	-
SFS 3011-133 U	35	5"	133 x 6.5	133.0	120.0	152.4	184	92.1	180.0	60	17.0	5/8" x 2"	M 16 x 50	-	-
SFS 3011-139.7 U	35	5"	139.7 x 10	140.0	120.0	152.4	184	92.1	180.0	60	17.0	5/8" x 2"	M 16 x 50	-	-

PN = nominālais spiediens PB = maks. ekspluatācijas spiediens

Sērija: LL = ļoti vieglā L = vieglā S = smagā

Ø = caurules ārējais diametrs