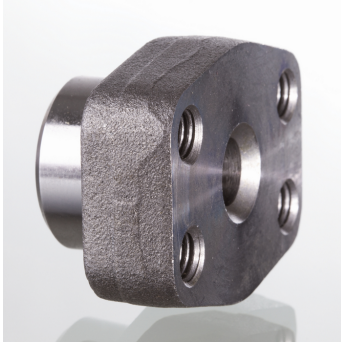


Ieskrūvējams SAE slēptais atloks, BSP



Standarts  
SAE J 518 C  
ISO 6162  
ISO 6162  
Konstrukcija  
Taisna  
Modelis  
Ieskrūvējams SAE slēptais atloks  
Stiprinājums  
Iekšējās vītnes metriskajām skrūvēm Skrūves  
Piegādes apjoms  
tikai atloks  
Materiāls  
S355J2G3 (ST52.3)  
Virsmas aizsardzība  
ieeļļošana ar melno eļļu

## Norādot

Norādītais maksimālais ekspluatācijas spiediens attiecas uz atloku! Reālo ekspluatācijas spiedienu nosaka caurule (sieniņu biezums) un tās kvalitāte!

## Produkts

Apzīmējums	Spiediena sērija	PB 10.9 bar	Tipizmērs	A	Ø B mm	C mm	D mm	E mm	F mm	G mm	H mm	I mm	M metr.
GFS 80 G	3000 PSI	350	1/2"	G 1/2" -14	13	38.1	54	17.5	46	36	16	19	M 8
GFS 80 G 3/8	3000 PSI	350	1/2"	G 3/8" -19	13	38.1	54	17.5	46	36	16	19	M 8
GFS 100 G	3000 PSI	350	3/4"	G 3/4" -14	19	47.6	65	22.2	50	36	18	19	M 10
GFS 100 G 1/2	3000 PSI	350	3/4"	G 1/2" -14	13	47.6	65	22.2	50	36	18	19	M 10
GFS 102 G	3000 PSI	315	1"	G 1" -11	25	52.4	70	26.2	55	38	18	22	M 10
GFS 102 G 3/4	3000 PSI	315	1"	G 3/4" -14	19	52.4	70	26.2	55	35	21	19	M 10
GFS 104 G	3000 PSI	250	1.1/4"	G 1.1/4" -11	32	58.7	79	30.2	68	41	21	22	M 10
GFS 104 G 1	3000 PSI	250	1.1/4"	G 1" -11	25	58.7	81	30.2	65	42	25	22	M 10
GFS 106 G	3000 PSI	200	1.1/2"	G 1.1/2" -11	38	69.9	93	35.7	78	45	25	24	M 12
GFS 106 G 1 1/4	3000 PSI	200	1.1/2"	G 1.1/4" -11	32	69.9	95	35.7	78	45	27	24	M 12
GFS 108 G	3000 PSI	200	2"	G 2" -11	51	77.8	102	42.9	90	45	25	30	M 12
GFS 108 G 1 1/2	3000 PSI	200	2"	G 1.1/2" -11	38	77.8	102	42.9	90	45	25	26	M 12
GFS 110 G	3000 PSI	160	2.1/2"	G 2.1/2" -11	63	88.9	114	50.8	105	50	25	30	M 12
GFS 110 G 2	3000 PSI	160	2.1/2"	G 2" -11	51	88.9	114	50.8	105	50	25	30	M 12
GFS 112 G	3000 PSI	138	3"	G 3" -11	73	106.4	134	61.9	124	50	27	34	M 16
GFS 112 G 2 1/2	3000 PSI	138	3"	G 2.1/2" -11	63	106.4	134	61.9	124	50	27	30	M 16
GFS 114 G	3000 PSI	35	3.1/2"	G 3.1/2" -11	89	120.7	152	69.9	136	48	27	34	M 16
GFS 114 G 3	3000 PSI	35	3.1/2"	G 3" -11	73	120.7	152	69.9	136	48	27	34	M 16
GFS 116 G	3000 PSI	35	4"	G 4" -11	99	130.2	162	77.8	146	48	27	34	M 16
GFS 116 G 3 1/2	3000 PSI	35	4"	G 3.1/2" -11	89	130.2	162	77.8	146	48	27	34	M 16
GFS 401 G	6000 PSI	400	1/2"	G 1/2" -14	13	40.5	54	18.2	46	36	16	19	M 8
GFS 401 G 3/8	6000 PSI	400	1/2"	G 3/8" -19	13	40.5	54	18.2	46	36	16	19	M 8
GFS 402 G	6000 PSI	400	3/4"	G 3/4" -14	19	50.8	71	23.8	55	35	21	22	M 10
GFS 402 G 1/2	6000 PSI	400	3/4"	G 1/2" -14	13	50.8	71	23.8	55	35	21	22	M 10
GFS 403 G	6000 PSI	400	1"	G 1" -11	25	57.2	81	27.8	65	42	25	24	M 12
GFS 403 G 3/4	6000 PSI	400	1"	G 3/4" -14	19	57.2	81	27.8	65	42	25	24	M 12
GFS 404 G	6000 PSI	400	1.1/4"	G 1.1/4" -11	32	66.7	95	31.8	78	45	27	25	M 14
GFS 404 G 1	6000 PSI	400	1.1/4"	G 1" -11	25	66.7	95	31.8	78	45	27	25	M 14
GFS 405 G	6000 PSI	400	1.1/2"	G 1.1/2" -11	38	79.4	112	36.5	94	50	30	28	M 16
GFS 405 G 1 1/4	6000 PSI	400	1.1/2"	G 1.1/4" -11	32	79.4	112	36.5	94	50	30	28	M 16
GFS 406 G	6000 PSI	400	2"	G 2" -11	51	96.8	134	44.5	114	65	37	30	M 20
GFS 406 G 1 1/2	6000 PSI	400	2"	G 1.1/2" -11	38	96.8	134	44.5	114	65	37	30	M 20

PN = nominālais spiediens PB = maks. ekspluatācijas spiediens