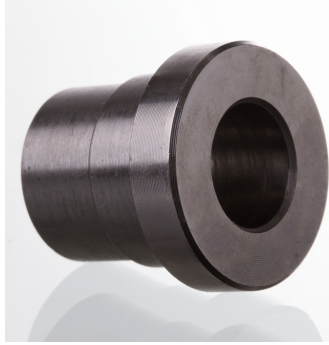


# G VKS ST 250

Kvadrātveida atloks, Cetop, iepriekšējās metināšanas kopa



Konstrukcija  
Taisna  
Modelis  
Cetop kvadrātveida atloks  
Standarts  
CETOP RP 63H  
ISO 6164  
ISO 6164  
Materiāls  
S355J2G3 (ST52.3)  
Virsmas aizsardzība  
ieeļļošana ar melno eļļu

## Produkts

| Apzīmējums       | Spiediens PB<br>bar | Tipizmērs | A<br>mm | Ø B<br>mm | C<br>mm | D<br>mm | E<br>mm |
|------------------|---------------------|-----------|---------|-----------|---------|---------|---------|
| G VKS 38 ST 250  | 250                 | 3/8"      | 18      | 12.5      | 24.5    | 18.0    | 30      |
| G VKS 12 ST 250  | 250                 | 1/2"      | 22      | 15.0      | 30.2    | 24.0    | 30      |
| G VKS 34 ST 250  | 250                 | 3/4"      | 28      | 20.0      | 38.1    | 31.5    | 35      |
| G VKS 1 ST 250   | 250                 | 1"        | 35      | 25.0      | 44.4    | 38.0    | 40      |
| G VKS 114 ST 250 | 250                 | 1.1/4"    | 43      | 32.0      | 50.8    | 43.0    | 45      |
| G VKS 112 ST 250 | 250                 | 1.1/2"    | 50      | 38.0      | 60.3    | 50.0    | 50      |
| G VKS 2 ST 250   | 250                 | 2"        | 62      | 47.0      | 71.4    | 62.0    | 60      |
| G VKS 212 ST 250 | 250                 | 2.1/2"    | 76      | 58.0      | 87.2    | 76.0    | 70      |
| G VKS 3 ST 250   | 250                 | 3"        | 90      | 70.0      | 101.6   | 90.0    | 80      |
| G VKS 312 ST 250 | 250                 | 3.1/2"    | 102     | 80.0      | 119.0   | 102.0   | 90      |
| G VKS 4 ST 250   | 250                 | 4"        | 114     | 90.0      | 131.0   | 114.0   | 105     |

PN = nominālais spiediens PB = maks. ekspluatācijas spiediens

Sērija: LL = ļoti vieglā L = vieglā S = smagā